

# Vectorworks® Architect

Realize Your Most Inspired Visions



# Vectorworks Architect

## Vectorworks Architect 2010:

- 1 Flexible**  
Enjoy the Freedom to Design the Way you Want
- 2 Versatile**  
Create, Model, and Present with One Application
- 3 Intuitive**  
Work the Way you Think
- 4 Smart**  
Make a Good Investment in Yourself



Courtesy of Daniel Jansenson

## Change Is Good

*And when it's easy, it's even better. With Vectorworks Architect 2010, we're making change easy. Use our superior 2D capabilities and a simplified 3D environment to accurately visualize and edit your design with ease. Take advantage of robust core technologies like Parasolid®, and the Dimensional Constraint Manager (DCM) from Siemens PLM to tackle larger, more complex models and reach higher levels of modeling automation. Use the architectural design features and simpler rendering for accurate, beautiful work in mere clicks. And, do it all without turning your firm upside down. We're making change easy, so your work is easy too.*

## Supporting Sustainable Building

When your goal is sustainability, Vectorworks Architect is an indispensable tool. You can do things like use the database spreadsheet to calculate building performance using programming analysis (with parametric Space objects), detailed material take-offs, lighting power density requirements, building envelope prediction of thermal performance, and the natural ventilation "stack effect." You can simulate solar gain with the solar animation command. And you can export data-rich building models using the Industry Foundation Classes (IFC) 2x3 interoperability standard used by energy simulation, material take-off and costing, and 4D construction sequencing applications. With such rich data, you'll answer the "how many" and "how much" very early in the process, and ensure a smaller carbon footprint.

Parasolid is a registered trademark of Siemens PLM Software.



## Vectorworks Architect

"What we like best about Vectorworks Architect is its extreme ease of use, which has a positive impact on our productivity and has helped make our firm profitable. Anyone can come into our office, whether it's a new hire or someone with 20 years of drafting in a different program, and we can get them up and running in a week."

John Woodworth  
Stickney Murphy Romine  
Architects  
Seattle, WA



Courtesy of Resolution: 4 Architecture;  
Image courtesy of Wes Milholder



Courtesy of Dick Clark Architecture  
Image courtesy of Paul Bardagjy

1

### Flexible: Enjoy the Freedom to Design the Way you Want

With Vectorworks Architect you're not limited to a prescribed workflow, so you have the freedom to work the way you want to work. Incorporate your existing approach to design to make the best use of the skills you already have in-house. Collaborate seamlessly with other people and with other software applications. Here are some other things you can do:

- Use a quick sketch or a simple diagram when that's all you need.
- Put together winning 2D/3D presentations when you're still competing for the job and don't have the time or budget to make the investment in a detailed BIM approach.
- Turn your project team loose with Vectorworks Architect's outstanding production tools when they "just want to draft it."
- Incorporate BIM technology when it's right for the client and project—without turning the firm upside down.

## Vectorworks Architect

### Freeform Modeling

Whether you're working in 2D or 3D, use the new "unified view" to draft or model within a unified coordinate system. With the 3D cursor, snapping is a breeze. Plus, a suite of solids and NURBS surface modeling tools allows you to create any shape and easily explore organic geometry. Blend, twist, sculpt, deform, or punch holes to your heart's content.

### Going Beyond the Building

Make the entire design shine. Often architecture is more than just the building. With Vectorworks Architect you can design anything—graphics, interior details, hardware, furniture, fittings, or whatever you can imagine—without having to learn or use additional applications.

### Efficient Workgroup Capabilities

Break up complex projects. Whether you're a sole practitioner subbing out work or a large firm dividing work among different members of the team, Vectorworks Architect's workgroup referencing provides a flexible way to split even the most complicated project into manageable pieces.

### Easy Translations

Ride the leading edge of digital practice, and move your building models fluidly between design, analysis, and construction packages with Vectorworks' IFC 2x3 translator. Read and write AutoCAD® 2010 (and earlier) files with our DWG translator. Send out drawing sets as non-editable, multi-page PDFs.

### Google Friendly

Import concept models from SketchUp® and access thousands of models from Google's 3D Warehouse. Export 3D models to Google Earth®.

### Endless Digital Images

Make your work even more compelling and easier to communicate with digital imagery. Import scans, digital photos, or web images. Import or export a wide array of image files, including Illustrator® EPS and native Photoshop® PSD files. Also, export your design for inclusion into your firm's marketing materials or website.

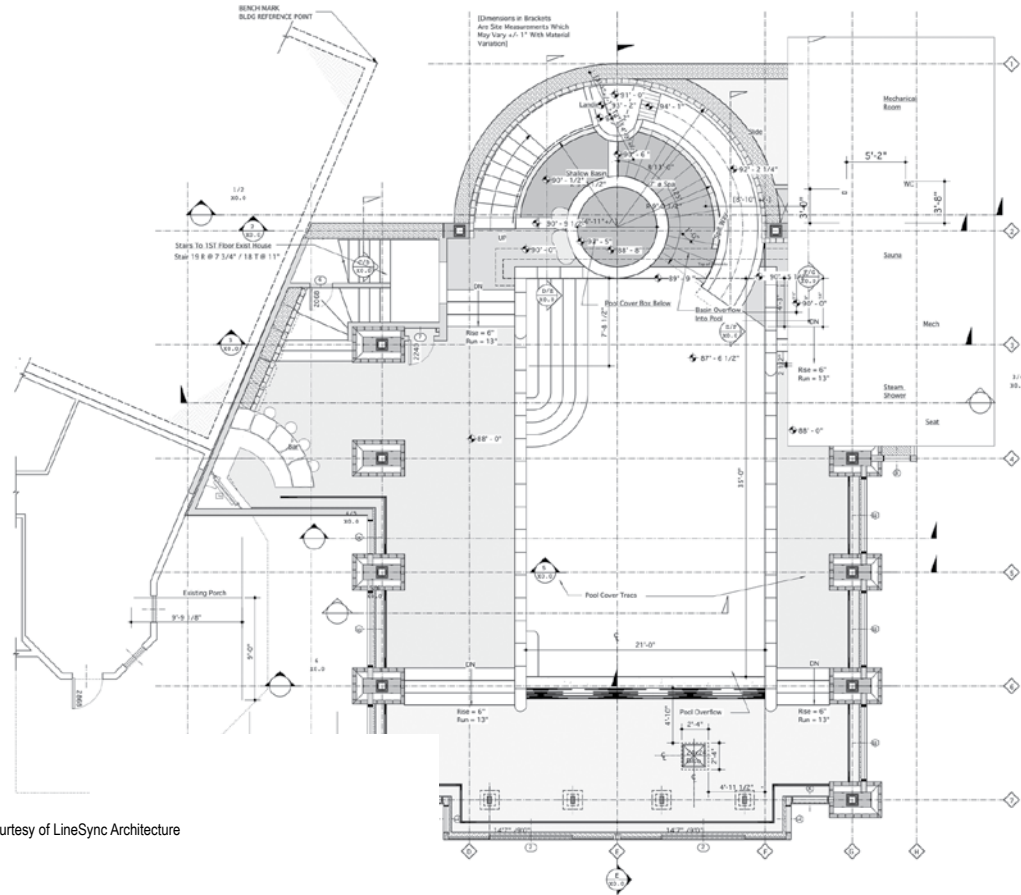
### Cutting Edge 3D

See it in 3D. Send models to 3D CAM machines and 3D printers, or access third-party model content. Vectorworks Architect supports a number of standard 3D file formats, including Parasolid X\_T, IGES, SAT, KML, STL and 3DS.

"Vectorworks Architect is very simple and intuitive. We have not found another program that approaches its combination of features and ease of use."

Greg Kiss, principal  
Kiss + Cathcart  
New York, NY

Courtesy of LineSync Architecture



Courtesy of LineSync Architecture



# Vectorworks Architect

## 2 Versatile: Create, Model, and Present with One Application

Move easily between tasks. From design concepts to construction documentation and every design phase in between, Vectorworks Architect marries precision 2D drafting and flexible 3D modeling with state-of-the-art technology. Create, model, and present easily and precisely with one application. With Vectorworks Architect, you can do it all.

Vectorworks Architect boasts a comprehensive set of design tools to support your entire practice. You have complete functionality for:

### Powerful Conceptualization

Find your inspiration and start drawing. Or if you would like, import hand sketches, pictures of the site, and even documents from other applications. Invoke ideas in 2D, and explore them in 3D with freeform models. Win the job, then invest the time in building the building.

### Innovative Building Information Modeling (BIM)

Vectorworks Architect gives you BIM that works. With innovative and leading parametric technologies at its core, Vectorworks Architect ensures you the best possible platform for making the change to BIM easy. The core modeling engine, Parasolid, provides you with the world's most robust 3D modeling engine to tackle the simplest to the most complex of models. And the new 2D Dimensional Constraint Manager (DCM), ensures a solid foundation for associating objects, so you can adopt BIM without having to "re-invent" your firm's workflow. With BIM, you can work faster while reducing drawing errors. Cutting-edge capabilities link plans, elevations, sections, perspectives, reports, and even rendered views, so a change to one updates the others. Query the model for information at any time, and using the IFC standard, move your building models to a growing selection of validation, analysis, and construction applications. For more, check out [www.Vectorworks.net/BIM](http://www.Vectorworks.net/BIM)

Courtesy of Herrera Design Inc., image by Juan Herrera



"No matter where a file originates from or what format it is, Vectorworks can handle it all"

Rob Glisson  
rojo Architecture  
Tampa, FL

ROAD 3128 3122 VERDUGO ROAD 3118





## Vectorworks Architect

### Superior 2D

Produce high-quality construction documents with ease. Vectorworks offers precision 2D drafting tools, intelligent objects for building, detailing, MEP, furniture, millwork, annotations, and thousands of free symbols from leading building product companies. A centralized database enables you to store, manage, and recall notes. Vectorworks Architect's Issue Manager keeps track of what, when, and to whom files were issued, and it automatically dates your title blocks. Batch print drawing sets or export them as multi-page PDFs at full or reduced sizes.

### Automatic Analysis and Reporting

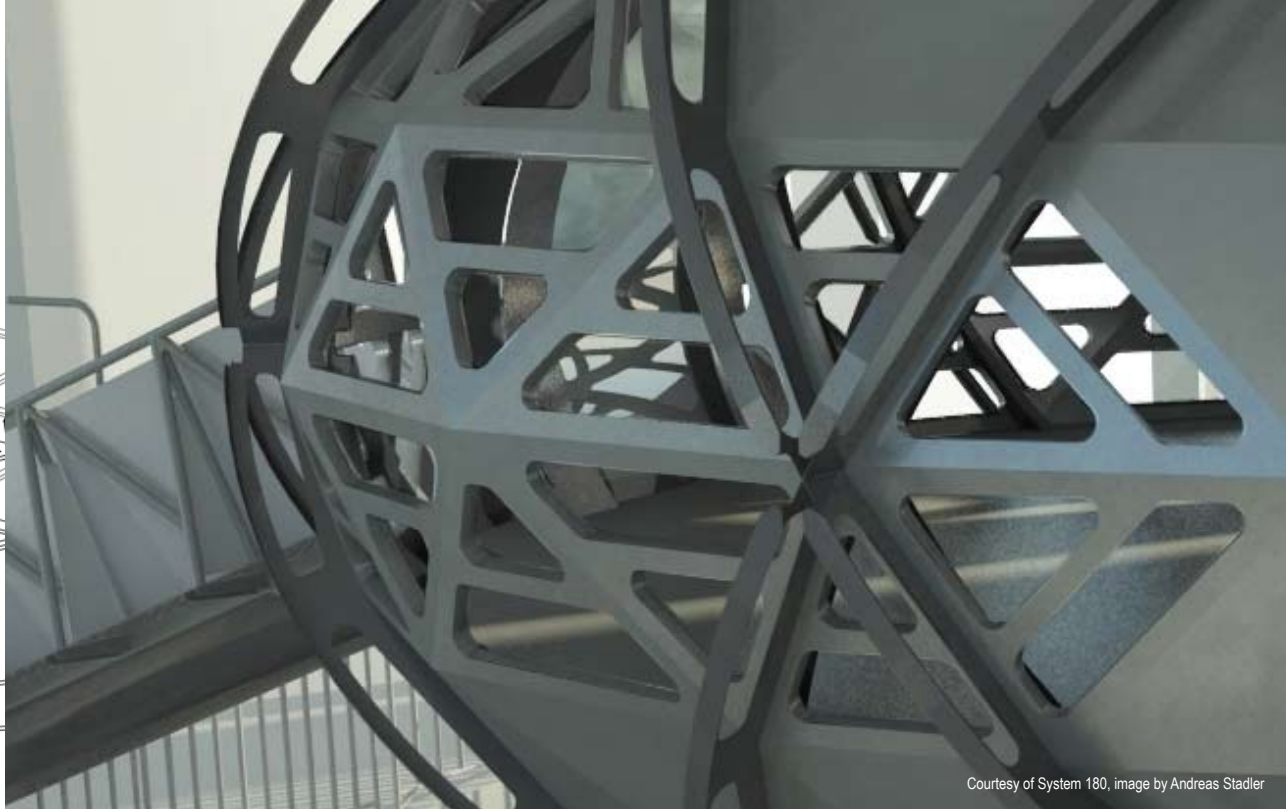
Stop counting items in your drawings. Automatic data tracking does the tedious work for you—a built-in worksheet continually keeps tabs. Use the framing module to effortlessly create framing models, plans, and elevations, as well as framing takeoffs for floors, walls, and roofs. The application goes further than automated schedules and materials takeoffs. It provides a user-defined, quick, and accurate way to assign custom data to any object and create unique reports that predict project performance. And, take advantage of our Solar Animation feature in Renderworks™ to do solar studies. Let Vectorworks Architect do the hard stuff.

### Unique Presentations

Define and communicate your signature look with our advanced, high-end technology that's famous for helping our users achieve beautiful, graphically rich presentations. Tap into our large libraries of entourage and unlimited palettes of colors. Your style is not limited by “cookie-cutter” looks. Add gradients, image fills, stipples, and hatching. Easily import digital images and graphics. Use our exclusive sketch rendering technology to change hard-lined drawings into soft, hand-sketched illustrations. Unique page layout capabilities make it simple to arrange presentation boards.

### Renderworks

Plug in Renderworks to create photorealistic renderings or choose an artistic rendering option to make your scenes look hand drawn. Renderworks is seamlessly integrated—you won't waste time importing and exporting the model as the design changes.





## Vectorworks Architect

3

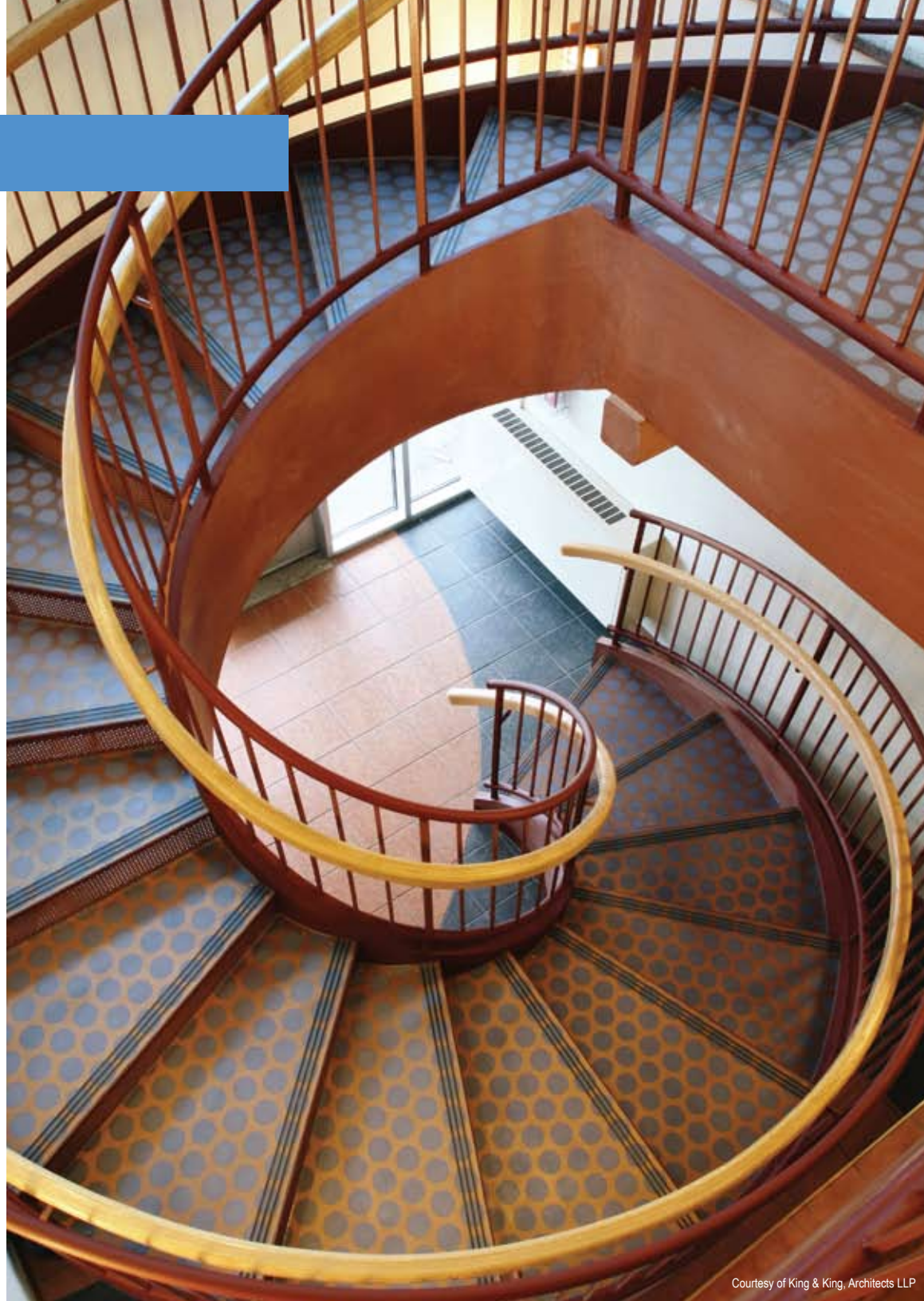
### Intuitive: Work the Way You Think

#### Easy-to-use Interface and Drafting Tools

Do what you like to do best—design. You won't waste time getting up to speed because Vectorworks Architect's simple, customizable interface and what-you-see-is-what-you-get display make it easier to learn and use than standard CAD applications. No matter what you're switching from, Vectorworks Architect's interface will be familiar. Vectorworks' SmartCursor™ technology replaces manual drafting tools, so even inexperienced CAD users can make the switch easily.

#### Tailored for Your Success

Work in tandem with the application. Vectorworks Architect is designed to think the way you think. In addition to designing with lines, arcs, and circles, you can design with walls, doors, and windows. The building objects are easy to edit and automatically display in both 2D and 3D views.



"There are many fine and talented folks who generously share their wit and wisdom with all. The online community is populated with various levels of Nemetschek North America employees (support personnel all the way to VPs) who chime in quite regularly."

Patrick J. Immel



Courtesy of GDP Architects Sdn Bhd

Courtesy of King & King, Architects LLP





4

### Smart: Make a Good Investment in Yourself

Affordable, customer-focused, and proven worldwide—Vectorworks Architect is a smart investment in you.

#### Affordable

You won't find another professional design application that includes so much for such a reasonable price. In one package, you get state-of-the-art tools and technology and the ability to work from conception to completion—a great value. You also get free software updates and affordable upgrades. With free technical support and affordable training options, you get value far beyond your initial savings. We never force subscriptions, so you're free to upgrade when and how you choose. As your business grows, we add extra seats at a discounted price. We offer a lot of great value and no hidden fees.



Courtesy of Linesync Architecture, image by Luis M. Ruiz

#### Customer Focused

Relax. We're here for you every step of the way. We listen and learn from your input—that's how Vectorworks Architect is created. So your relationship with us doesn't end when you install the software. We provide many channels for you to get the information you need. If you'd like training, take advantage of our multiple offerings: onsite, online, or in the classroom. If a technical issue stumps you, contact our technical support team for help. You can also tap into our Vectorworks community with over 450,000 enthusiastic users worldwide and user groups on the

local level. E-mail listservs provide assistance around the clock, or you can use a service directory and job board to find help.

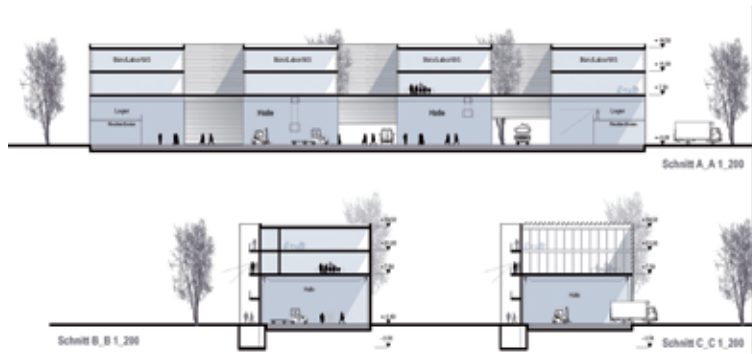
Vectorworks users often find themselves in Internet-based dialogues with our engineers and managers. We take pride in cultivating lasting relationships with our users, and we translate their feedback into positive product developments. With your input, we can continue to develop software that exceeds your expectations. After all, your success is our success.



Courtesy of Raymond Beeler, Architect, PC



## Vectorworks Architect



Courtesy of Henn Architekten



Courtesy of Hotson Bakker Boniface Haden Architects

### Proven Worldwide

Be part of a long tradition of excellence. Vectorworks was founded over 20 years ago, and now counts more than 450,000 professional designers worldwide. We listen to our customers and use their feedback to create a product that continually exceeds their expectations, delivering superior design flexibility and world-class graphics.

Vectorworks is the best-selling cross-platform professional CAD software and the preferred application for world-renowned and award-winning architects like Rios Clementi Hale Studios, Studio Daniel Libeskind, tec Architecture, and Leers Weinzapfel, as well as countless others who move the design world forward every day.

Vectorworks Architect is produced by Nemetschek North America, a wholly owned subsidiary of Nemetschek AG, which is the world's leading IT company for the design, construction, and management of buildings and real estate. Nemetschek software solutions are used by design professionals in 142 countries and translated into eight languages.

With Vectorworks Architect 2010, the tradition continues.

**Vectorworks Architect**  
**Realize Your Most Inspired Visions.**

Nemetschek North America, Inc.  
7150 Riverwood Drive, Columbia, MD 21046-1295 USA  
www.vectorworks.net | T 410-290-5114 | F 410-290-8050

©2009 Nemetschek North America, Inc.  
Vectorworks is a registered trademark of Nemetschek North America, Inc.  
Renderworks is a trademark of Nemetschek North America, Inc.

Parasolid is a registered trademark of Siemens PLM Software.

#### System Recommendations

Mac OS X 10.5.7 or later  
QuickTime  
Intel Core 2GHz or better  
DVD-ROM drive (dual layer)  
Screen resolution 1024 x 768 (XGA)  
Display color depth 15 bit or higher

Windows XP SP 3  
Windows Vista SP 2  
QuickTime 7.5 to 7.6 (higher versions not recommended)  
DVD-ROM drive (dual layer)  
Screen resolution 1024 x 768 (XGA)  
Display color depth 15 bit or higher

Vectorworks  
RAM 1GB minimum, 2GB recommended  
Hard drive space 10GB free

Vectorworks plus Renderworks  
RAM 2GB minimum, 4GB recommended  
Hard drive space 10GB free

Vectorworks Designer  
RAM 1GB minimum, 2GB recommended  
Hard drive space 10GB free

Vectorworks Designer plus Renderworks  
RAM 2GB minimum, 4GB recommended  
Hard drive space 10GB free

See [www.vectorworks.net/system-recommendations.php](http://www.vectorworks.net/system-recommendations.php)  
for updated information.