

# CradlePoint AER

Advanced Edge Routing for the Distributed Enterprise



Where the Network's Edge Meets the Cloud

**cradlepoint**

# Advanced Edge Routing for the Distributed Enterprise

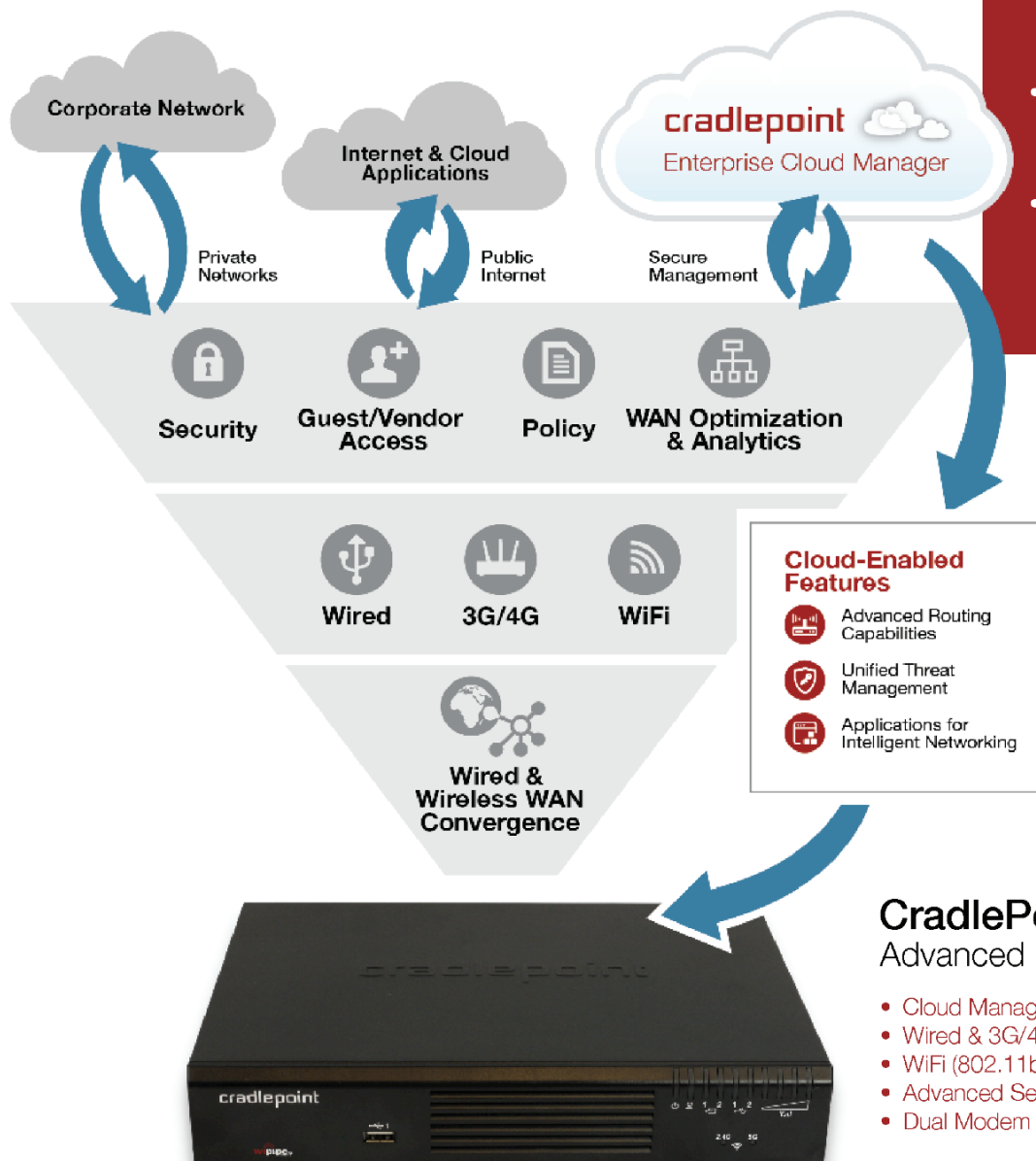
The CradlePoint AER 2100 is designed for the distributed enterprise to intelligently manage converged wired and wireless connectivity for a highly available “connected experience” at the edge.

This solution combines routing, WAN diversity, advanced security, private network support, and high-performance WiFi in a platform that can be deployed, managed, and optimized via CradlePoint Enterprise Cloud Manager™.

Network administrators can extend applications and services to remote branches through the real-time deployment of cloud-enabled services, applications, and analytics.

## AER 2100 Key Features

- Optimized for WAN diversity with integrated wired and wireless 4G WAN (including private network support)
- Dual-band concurrent 802.11ac high performance WiFi
- Cloud-managed for zero-touch configuration at deployment
- Advanced routing and best-in-class, cloud-based security options
- Extensible and easily integrated best-in-class, enterprise applications via an Open API
- Certified dual modem models for a “cut-the-wire” solution



### CradlePoint AER 2100 Advanced Edge Router

- Cloud Managed
- Wired & 3G/4G Wireless WAN
- WiFi (802.11b/g/n & 802.11ac)
- Advanced Security
- Dual Modem – Multi Carrier Support

# Customer Benefits

## Improve the Quality of Experience at the Edge

- Increase WAN bandwidth: 4G, Ethernet (T1, DSL, Cable, MetroE), WiFi as WAN
- Support cloud optimized IP multimedia communications
- Configure devices and security through the cloud
- Manage networks intelligently with real-time QoE analytics

## Diversify & Optimize Multi-WAN Paths

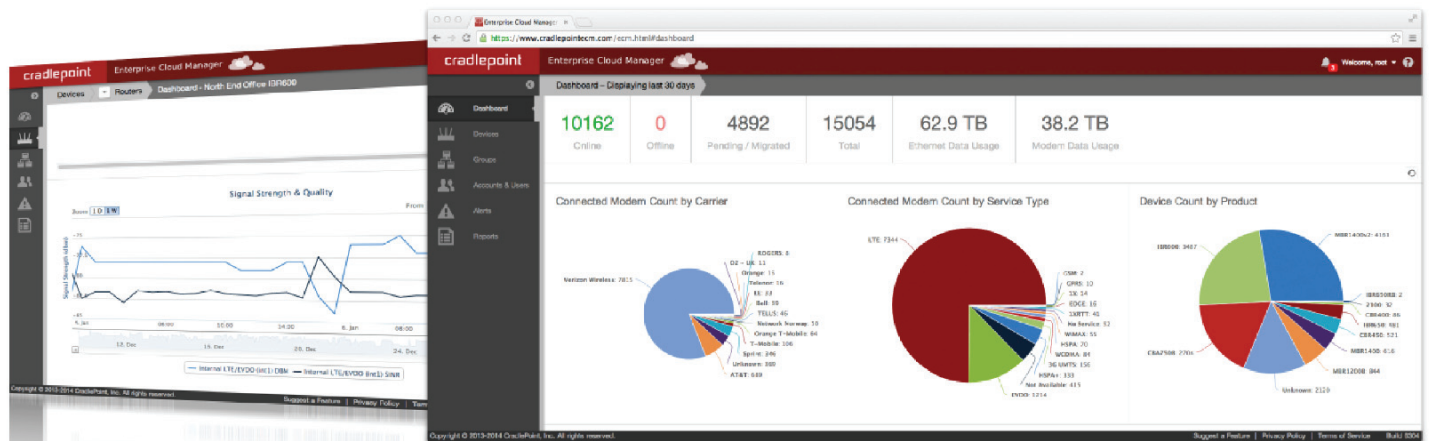
- Application aware policies for intelligent WAN selection and data usage optimization
- Add burst bandwidth quickly and easily for peak periods
- Industry leading WAN availability with dual modems for multi-carrier support
- Robust analytics to manage performance, data usage, and costs

## Scale Faster with Open and Extensible Architecture

- Deliver new services and applications for increased security and capabilities
- Leverage 3rd party partner applications through Enterprise Cloud Manager
- Integrate easily with enterprise applications using CradlePoint's Open APIs

## Secure the Network Where It's Most Vulnerable

- Protect assets with stateful firewall, advanced encryption, network segmentation, and VLAN support
- Secure data transactions with advanced VPN options
- Integrate Zscaler Security Cloud™ to inspect "direct to internet" traffic with near-zero latency
- Designed for PCI Compliant network architectures



▲ Always-connected, real-time network analytics.



cradlepoint

TOLL FREE: +1.855.813.3385  
[www.CradlePoint.com](http://www.CradlePoint.com)

SALES QUESTIONS  
[sales@cradlepoint.com](mailto:sales@cradlepoint.com)

Call, email, or visit  
[CradlePoint.com/AER](http://CradlePoint.com/AER)  
to learn more.

## Protect Your Investment

CradlePoint is the industry leader in deploying, securing, and managing the network's edge. Get peace of mind and ensure the best possible experience for your connected locations with our world-class professional services and support:

- Best-in-class 3G/4G Site Surveys & Installations
- CradleCare Enterprise Support
- 24/7 Technical Assistance Center and Advanced Warranty Replacement

For more information, visit [CradlePoint.com/CradleCare](http://CradlePoint.com/CradleCare).

## The Lowest Total Cost of Ownership

Cloud management and CradleCare Enterprise Support combine to provide:

- Zero-touch configuration at installation for rapid deployment
- Fewer truck rolls through cloud-enabled configurations and troubleshooting
- Analytics for intelligent and optimized network management

For more information, visit [CradlePoint.com/CradleCare](http://CradlePoint.com/CradleCare)